

PRODUCT CATALOG



Plywood • Panels • Lumber



aspectgroup.ae
+971 555 33 0240

Birch Plywood

Multi-layer sheet material made from birch veneer. Layers are glued together with perpendicular grain orientation, providing high strength and stability.



Technical Specifications:

Parameter	Value
Thickness	3 / 4 / 6 / 8 / 9 / 12 / 15 / 18 / 19 21 / 24 / 27 / 30 mm
Dimensions	1220x2440 mm / 1250x2500 mm 2440x1220mm / 2500x1250 mm 1525*x525 mm
Grade	B/BB, S/BB, BB/BB, CP/CP CP/C, C/C
Finish	Sanded / Unsanded

Applications:

- Furniture manufacturing
- Interior finishing
- Packaging and containers
- Construction structures

Quality & Safety: ULEF certificate (CARB) confirms minimal formaldehyde emission and environmental compliance.

Sanded Plywood

This plywood is used for various purposes, such as furniture manufacturing. The material is relatively inexpensive, lightweight, and therefore well suited for this task. Plywood is also used for leveling when laying floors. Can also be used for ceiling and wall finishing.



Technical Specifications:

Parameter	Value
Thickness	5.2 / 6.5 / 9 / 12 / 18 / 19 / 21 to 35 mm
Dimensions	1220×2440 mm / 2440×1220 mm 1250×2500 mm / 2500×1250 mm 1525×1525 mm
Core	Birch veneer
Finish	Sanded on one or both sides

Applications:

- Furniture production
- Floor leveling and installation
- Ceiling and wall finishing
- Interior constructions

Quality & Safety: ULEF certificate (CARB) confirms minimal formaldehyde emission and environmental compliance.

Laminated Plywood

Panels with film coating designed for concrete formwork applications.



Technical Specifications:

Parameter	Value
Thickness	6.5 to 35 mm
Coating	Phenolic film on both sides
Core	Birch veneer
Edge	Sanded on one or both sides

Applications:

- Monolithic construction and concrete formwork
- Multiple reuse (up to 50+ cycles with 220 g/m² density)
- Bridge and tunnel construction
- Industrial floors and platforms

Quality & Safety: ULEF certificate (CARB) confirms minimal formaldehyde emission and environmental compliance.

Water Resistant Plywood

Water resistant plywood based on phenol-formaldehyde glue. Designed for use in high humidity conditions and outdoor environments.



Technical Specifications:

Parameter	Value
Thickness	4 / 6 / 9 / 12 / 15 / 18 / 19 21 / 24 / 27 mm
Dimensions	1220×2440 mm / 2440×1220 mm 1250×2500 mm / 2500×1250 mm
Glue	FSF (phenol-formaldehyde)
Water resistance	High

Applications:

- Exterior finishing and cladding
- Roofing works
- Advertising structures
- Automotive industry
- Railway and shipbuilding

Quality & Safety: ULEF certificate (CARB) confirms minimal formaldehyde emission and environmental compliance.

Particleboard (Chipboard)

Sheet material manufactured by hot pressing wood chips with binder. Economical solution for furniture manufacturing and construction.



Technical Specifications:

Parameter	Value
Thickness	8 / 10 / 12 / 16 / 18 / 22 / 25 / 32 / 38 mm
Dimensions	1830×2440 mm / 1830×2750 mm / 2070×2800 mm
Emission	E1 / E0.5 (CARB ULEF)
Finish	Sanded

Applications:

- Cabinet furniture production
- Countertop manufacturing (with coating)
- Interior partitions
- Substrate for laminate and parquet
- Packaging

Quality & Safety: ULEF certificate (CARB) confirms minimal formaldehyde emission and environmental compliance.

MDF (Medium Density Fiberboard)

Panel material made from fine wood fibers by dry pressing method. Features uniform structure and smooth surface.



Technical Specifications:

Parameter	Value
Thickness	3 / 4 / 6 / 8 / 10 / 12 / 16 18 / 19 / 22 / 25 / 30 mm
Dimensions	1220×2440 mm / 1220×2800 mm 1830×2440 mm
Emission	E1 / E0.5 (CARB ULEF)
Finish	Sanded on both sides

Applications:

- Furniture facade production
- Door manufacturing
- Decorative panels and moldings
- Retail fixtures
- Acoustic panels

LVL Beam (Laminated Veneer Lumber)

Structural material made from glued veneer layers with parallel grain orientation. Features high strength and dimensional stability.



Technical Specifications:

Parameter	Value
Thickness	21 / 24 / 27 / 30 / 33 / 36 39 / 45 / 51 / 63 / 75 mm
Width	200 / 240 / 300 / 400 / 500 600 mm
Length	up to 18,000 mm (standard 2500–13,000 mm)
Bending strength	48–62 MPa
Moisture	8–12%

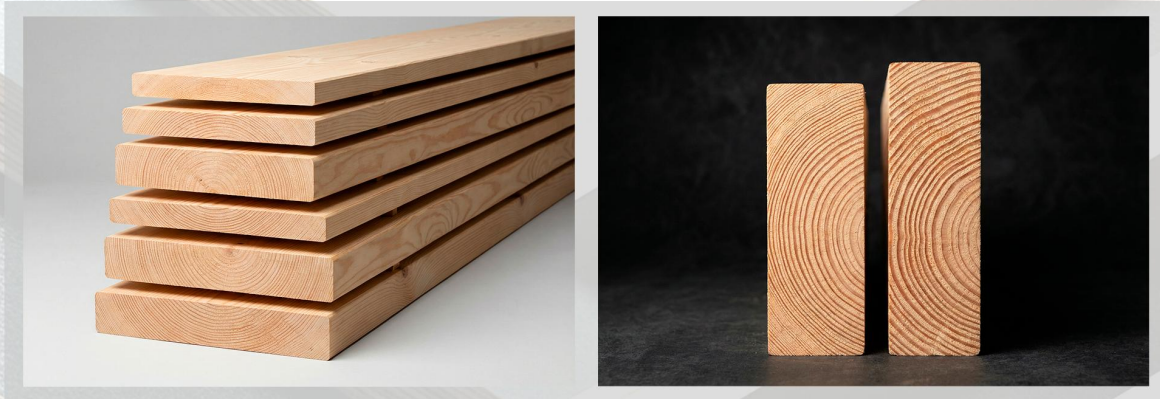
Applications:

- Load-bearing floor beams
- Rafter systems
- Timber frame construction
- Formwork beams
- Industrial structures



Sawn Timber

High-quality softwood lumber for construction and manufacturing.



Center Boards

Parameter	Value
Thickness	44 / 50 / 63 mm
Width	100 / 125 / 150 / 175 200 / 225 mm
Length	4.8 / 5.1 / 5.4 / 5.7 / 6.0 m
Grading	Grade I-IV, V
Moisture	up to 18% (16 ± 2%)

Side Boards

Parameter	Value
Thickness	19 / 22 mm
Width	100 / 125 / 150 / 175 200 / 225 mm
Length	4.8 / 5.1 / 5.4 / 5.7 / 6.0 m
Grading	Grade I-IV, V
Moisture	up to 18% (16 ± 2%)

Applications:

- Frame construction
- Pallet and packaging production
- Scaffolding and formwork
- Roofing structures
- Joinery and carpentry work